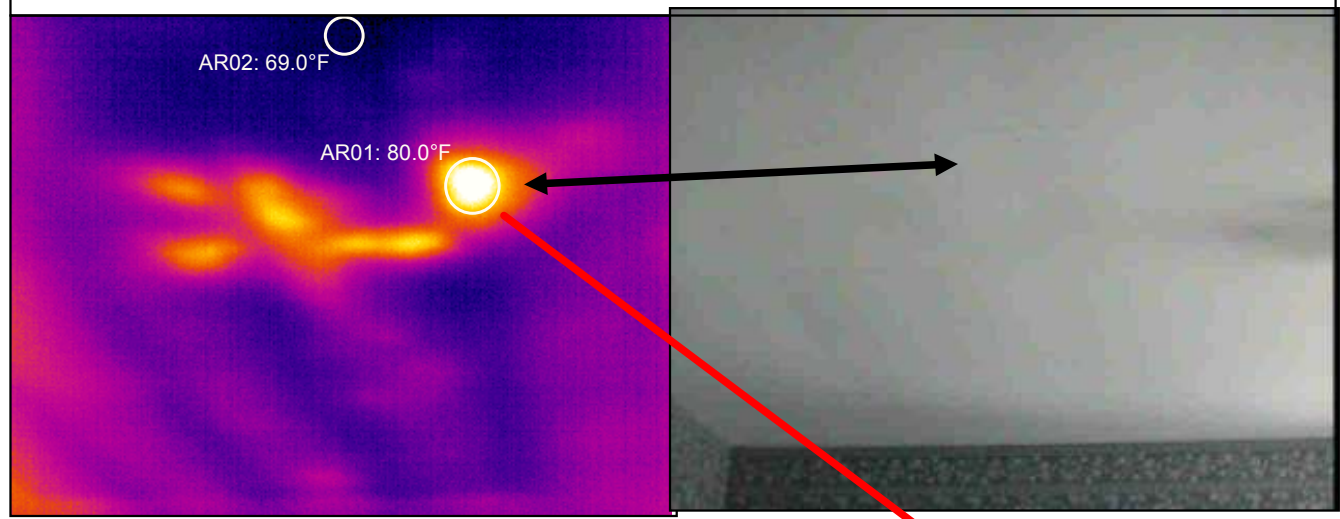


## IR Scan Results



These images were taken on **8/9/2005** at **1:12:52 PM** File Name **Pic043.jpg**

<u>Infrared Image Information</u>	Ambient Temperature
<b>Temperature Rise ( AR01 - AR02)</b>	<b>10.1 °F</b>
<b>Reference Temperature (AR02)</b>	69.8°F
<b>Point of Concern Temp. (AR01)</b>	80.0°F

<u>Infrared Image Information</u>	
<b>Location</b>	Upstairs front bedroom
<b>Problem</b>	Unknown at this time
<b>Condition</b>	Serious
<b>Comments</b>	Possibly Mold , Mildew. variable Insulation

Anomalys of this nature are rare but are out there , This could be the results of Mold , Mildew, Condensation & moisture or as minor as uneven Insulation

<u>IR Technician Information</u>			
IR Technician	Olen C. Sawyer	Certification #	Level II # 12514
Phone Number	Toll Free 1-866-412-2368		Cell 828-230-0314