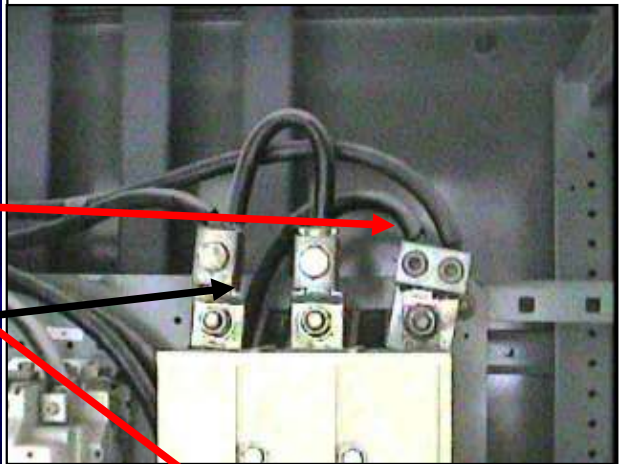
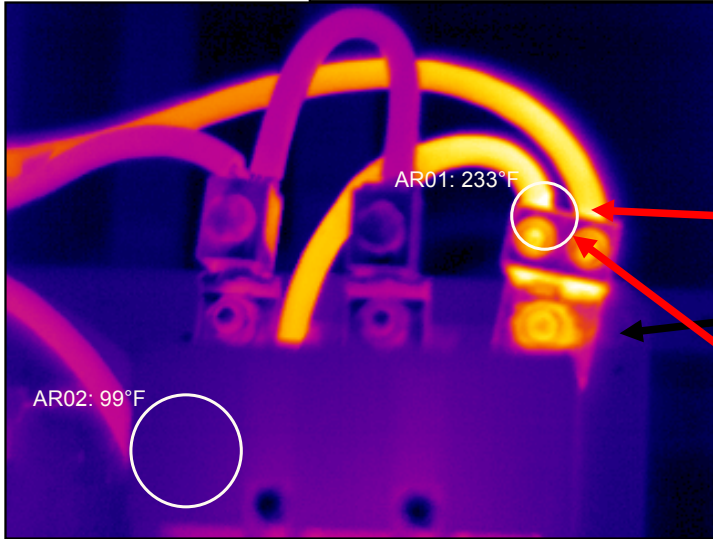


## IR Scan Results



These images were taken on **10/14/2005** at **10:09:44 AM**

File Name | Ir\_0118.jpg

### Infrared Image Information

Ambient Temperature -

<b>Temperature Rise ( AR01 - AR02)</b>	<b>119.5 °F</b>
<b>Reference Temperature (AR02)</b>	114°F
<b>Point of Concern Temp. (AR01)</b>	233°F

### Infrared Image Information

<b>Location</b>	#1 Rod mill
<b>Problem</b>	failing connection
<b>Severity</b>	Serious
<b>Comment's</b>	

Electrical component failure on production equipment can cause expensive loss of product production and non productive employee down time

### IR Technician Information

<b>IR Technician</b>	Olen C. Sawyer	<b>Certification #</b>	Level II # 12514
<b>Phone Number</b>	Toll Free 1-866-412-2368		Cell 828-230-0314